



Discover

TruPRP™

MAGELLAN®
PRP the way you want it.

Discover

TruPRP™

Discover the quality of Magellan® TruPRP™.

The Magellan® technology provides an automated dual spin processing system that can deliver (PRP) Platelet Rich Plasma as well as (PPP) Platelet Poor Plasma.

Magellan® PRP Growth Factor Assays (ELISA*)

60mL of initial blood was concentrated to 6mL of PRP (7.2X baseline platelet count).

Mean ± S.D. n = 9 (†n=4)	Initial Blood (60 mL)	PRP (6 mL)
PDGF AB (ng/mL)	10.2 ± 1.4	88.4 ± 28.8
PDGF AA (ng/mL)	2.7 ± 0.5	22.2 ± 4.2
PDGF BB (ng/mL)	5.8 ± 1.4	57.8 ± 36.6
TGF b1 (ng/mL)	41.8 ± 9.5	231.6 ± 49.1
VEGF (pg/mL)	83.1 ± 65.5	597.4 ± 431.4
bFGF† (pg/mL)	10.7 ± 2.9	48.4 ± 25.0
EGF (pg/mL)	12.9 ± 6.2	163.3 ± 49.4

Source: Arteriocyte Medical Systems TS-0078-130; TS-0078-182 (data on file)
*ELISA = Enzyme-Linked ImmunoSorbent Assay

Platelets release various growth factors:

PDGF - Platelet Derived Growth Factor

Cell growth, new generation and repair of blood vessels, collagen production

TGF-B

Growth and neogenesis of epithelial cells and vascular endothelial cells, promotion of wound healing

VEGF

Growth and new generation of vascular endothelial cells

FGF - Fibroblast Growth Factor

Tissue repair, cell growth, collagen production, hyaluronic acid production

EGF - Epithelial Growth Factor

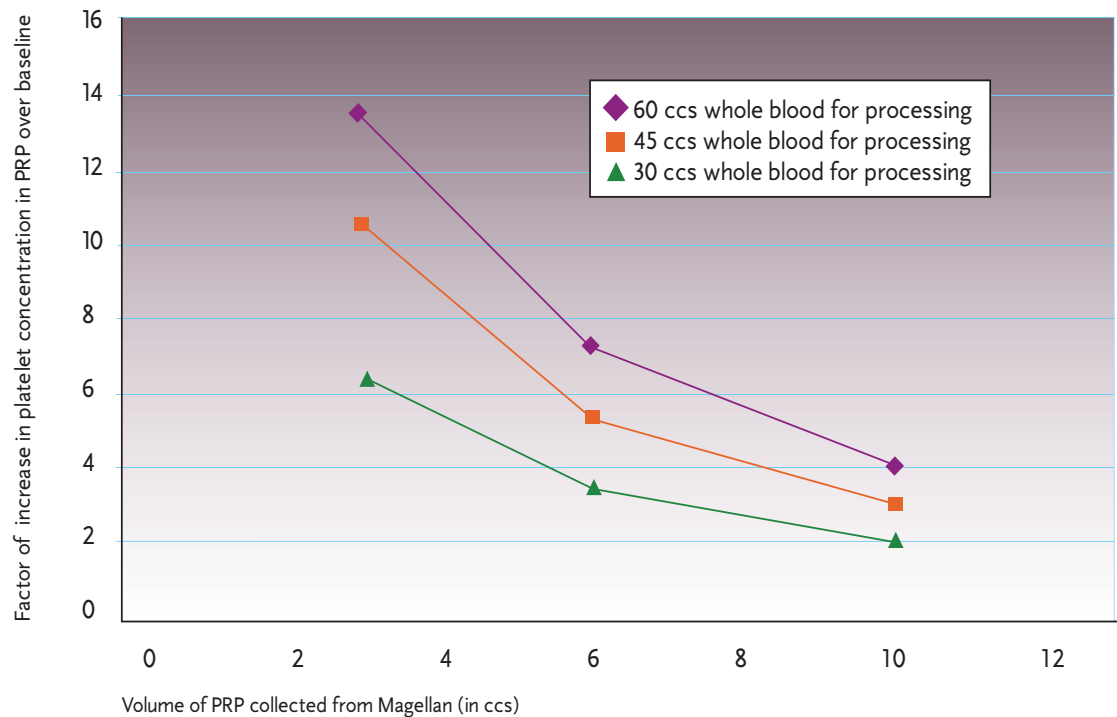
Promotion of epithelial cell growth, angiogenesis, promotion of wound healing

Customized

Each Patient is Unique

Meet each patient's specific needs with fully customizable product volumes and platelet concentrations.

The Magellan® Platelet Separator is unique in its ability to customize the PRP product. The system can be programmed to deliver a volume of 3 - 10 ml from each processing cycle. This allows you to customize the platelet concentration per ml within the PRP. Magellan® is approved for three processing cycles per disposable, allowing for a maximum of 30 ml of product.



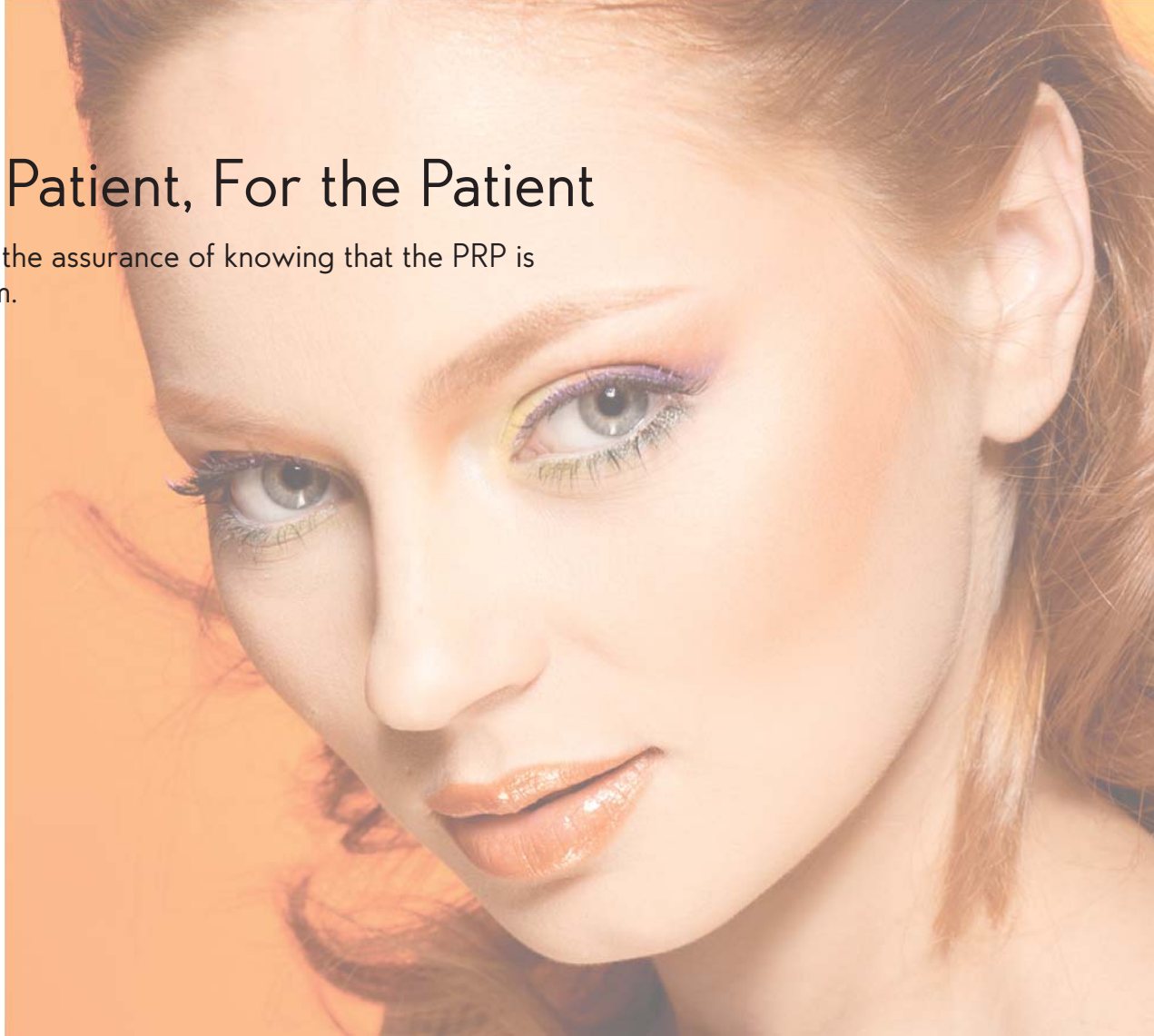
Customize TruPRP™ for Each Patient

With a simple push of a button you can customize PRP

60 ml of blood processed to 6 ml delivers a platelet concentration of 7.2 times baseline (see customization graph above). It is important to determine the volume needed for each application and process the appropriate volume of blood to keep platelet concentration at therapeutic levels.

From the Patient, For the Patient

Give your patients the assurance of knowing that the PRP is from them, for them.



Autologous

Why not give your patients what they are looking for? A natural alternative to synthetic fillers without the concern for allergic reactions or unwanted side effects.

According to several studies, Platelet Rich Plasma must contain platelet counts at least 4 - 6 times baseline in order to be therapeutic.^{3,4} PRP is rich in platelet growth factors as well as a fibrin matrix - the essentials for inducing collagen production and skin rejuvenation.^{2,5}

Platelet Poor Plasma is a rich source of fibrin matrix which has been used for extra injection sites including the hands and upper arms, or as a mask post laser resurfacing.^{7,8}

Known applications for PRP include, but are not limited to:

- Injection for Wrinkle Reduction, Volume¹
- Skin Rejuvenation^{2,5}
- Laser Resurfacing^{4,6}

Most Elegant Machine on the Market

The Magellan® Platelet Separator is not your everyday centrifuge. Unlike the lab centrifuges that have been repurposed, the Magellan® was specifically designed to concentrate blood at bed-side.

This fully automated system processes the blood without need for manual manipulation. At the end of its cycle the PRP is delivered into a collection syringe and is ready for immediate application.

Key Features:

- Fully Contained - Automated System
- Self Balancing Disposable Canister Eliminates Counterweights
- Electronic Sensor Facilitates Separation Phases
- Lightweight - Space Saving Design



Elegant Design

Ordering Information

TRU₁₀₀ Magellan[®] Autologous Platelet Separator 110V
TRU₃₀₀ Magellan[®] TruPRP[™] Complete Disposable Kit

References:

1. Cho et al. Effect of Platelet-Rich Plasma on Ultraviolet b-Induced Skin Wrinkles in Nude Mice. *Journal of Plastic, Reconstructive & Aesthetic Surgery* 2011; 64: e31-e39
2. Shane et al. Platelet Rich Fibrin Matrix with Facial Collagen Genesis and Epidermal Regeneration. (Abstract)
3. Marx, Robert E., DDS. Platelet-Rich Plasma (PRP): What is PRP and What is Not PRP? *Implant Dentistry* 2001; 10, No. 4
4. Hom et al. The Healing Effects of Autologous Platelet Gel on Acute Human Skin Wounds. *Arch Facial Plastic Surg.* 2007; 9:174-183
5. Sclafani et al. Induction of Dermal Collagenesis, Angiogenesis, and Adipogenesis in Human Skin by Injection of Platelet-Rich Fibrin Matrix. *Arch Facial Plastic Surg.* 2012; Mar-Apr; 14(2).
6. Na JI et al. Rapid healing and reduced erythema after ablative fractional carbon dioxide laser resurfacing combined with the application of autologous platelet-rich plasma. *Dermatol Surg.* 2011 Apr;37(4):463-8. doi: 10.1111/j.1524-4725.2011.01916.x.
7. Man et al. The Use of Autologous PRP and Autologous PPP in Cosmetic Surgery, Plastic and Reconstructive Surgery; 2001; vol 107, No. 1
8. Marx et al. The Basic Biology of Platelet Growth Factors; 2004; Platelet-Rich.com

Indication For Use:

The Magellan[®] Autologous Platelet Separator system is designed to be used in the clinical laboratory or intraoperatively at point of care for the safe and rapid preparation of platelet poor plasma and platelet concentrate (platelet rich plasma) from a small sample of blood or a small mixture of blood and bone marrow. The plasma and concentrated platelets produced can be used for diagnostic tests. Additionally, the platelet rich plasma can be mixed with autograft and/or allograft bone prior to application to an orthopedic site as deemed necessary by the clinical use requirements.

Disclaimer:

The platelet rich plasma prepared by this device has not been evaluated for any clinical indications. Platelet rich plasma prepared from a mixture of whole blood and bone marrow may contain higher levels of plasma free hemoglobin than platelet rich plasma prepared from whole blood.

45 South St.
Hopkinton, MA 01748

www.DiscoverTruPRP.com

Customer Service and Product Orders
1-866-773-6023
Email: info@DiscoverTruPRP.com

AMS98053LBL Rev 1.0
© Arteriocyte Medical Systems, Inc. 2013
All Rights Reserved
Printed in USA